



Weekly Bulletin 19th April 2024

Headteacher's Message

Welcome back to the summer term. We look forward to a hard-working, enjoyable and productive term ahead. From today, [a home-school links sheet](#) from your child's class teacher is available via both DB Primary and the school website. This details the ways in which you can support your child with their studies as well as informing you of the curriculum content to be covered during this half term in each subject area. I encourage you to read it and to use it as a basis for discussing with your child what they are learning about in school.

Each week I want to include a 'snapshot' of some of the things going on in school. For example, news from our ECO team, Worship group, V.I.P. (Very International People) and SNAG (School Nutrition Action Group). This week our focus is on the findings from our Poverty Proofing the School Day Audit and an update is shared below.

Best wishes,

Mr Rumbles

'Poverty Proofing the School Day' Audit

Pupils at Shincliffe Primary School spoke positively about a range of aspects of their school, their teachers, the curriculum and the inclusive approach the school takes towards its local community. Many of the parents are very happy with the school and can access the support they may need, if necessary. Leaders in the school are focused on ensuring pupils reach their full potential, as shown in their vision using a bible verse for developing pupils whose lives are lived to the fullness of what is achievable.

What is working well?

1. **Pupil Support:** All pupils reported having someone to speak to if they needed it. The school have invested in Thrive practitioners and Mental Health First Aiders and have made steps to be proactive in support rather than reactive.
2. **Pupil Voice:** The School Council is seen as effective and are seen to be improving the school for the pupils. They are voted for democratically without a popularity contest.
3. **Trips:** There are a large range of trips available to pupils which will improve the cultural capital of the pupils. The school only ask for donations in order to support those struggling to afford.

What are the key issues pupils face?

1. **Misunderstanding of poverty:** Pupils can explain and give examples of poverty as evidenced through 'homelessness' but are limited in their understanding.
2. **Food:** Pupils reported that the school dinner portions are too small and they are unable to get second helpings if they are still hungry.
3. **Parent Support:** Parents are reluctant to approach the school for financial support because of the stigma of others knowing they have received support.

Key recommendations

1. A more useful definition of poverty, and one that Poverty Proofing has adopted, is:

"Individuals, families and groups in the population can be said to be in poverty when they lack the resources to obtain the types of diet, participate in the activities, and have the living conditions and amenities which are customary, or at least widely encouraged and approved, in the societies to which they belong. Their resources are so seriously below those commanded by the average individual or family that they are, in effect, excluded from ordinary patterns, customs and activities."

School response: In school, teachers can raise awareness around material possessions and explore the impact of poverty within PSHE lessons

2. Feedback to the catering team comments about portion size and seconds to see if there can be anything done to improve these

School response: School have spoken with the catering team. They are following the recommended portion sizes from the School Foods Standards Agency – school will continue to monitor this.

3. Develop school-parent partnerships to help remove the stigma of asking for financial help. Develop an anonymous way of asking for help.

School response: Financial support is available for trips and extra-curricular opportunities. We have set up an anonymous family support email address that can be used if you are experiencing difficulties paying for trips and/or clubs or any other concerns. The address is: shincliffesupport@durhamlearning.net

The report also raised the following concerns from parents:

1. Frequent requests for money and non-uniform days.

School Response: School will review the frequency of requests for money and donations as well as requests for non-uniform days and reduce if appropriate.

2. More notice for trips.

School response: School will seek to ensure that trips and activities in school that are organised in advance will give parents at least a months' notice. For more expensive trips, such as Robinwood in Y6, school will set up payments earlier so they can be smaller amounts spread over time.

3. School Uniform.

School response: Through the work of FOSS, parents donate good quality second hand uniform during the year. We will make sure spare pre-loved uniform is available at parent's events and other school events for parents to help themselves to.

4. Providing gifts for teachers and sweets to celebrate their child's birthday.

School response: There are other ways that children can show their appreciation to their teacher rather than bringing in gifts. We can provide pupils with time and resources to make their teacher a card or write a letter of appreciation. There is also no expectation or encouragement from school for pupils bringing in sweets to celebrate a child's birthday.

If parents are concerned about any matter then please do make an appointment and I will be more than happy to meet with you.

Many thanks for your continued support.

Best wishes

Mr Rumbles

School Closure - Local and Police and Crime Commissioner elections- Thursday 2nd May 2024

I have been informed by Durham County Council that they require the school building for use as a polling station on 2nd May. We have challenged the decision and asked the Council to look at alternative options. They advise us that this is not possible and are therefore exercising their legal right to make use of the premises. As a result, school will therefore be closed to all pupils on 2nd May. We will provide remote learning for the children.

Noticeboard

- **School Meal Price Increase** - A decision was taken by the School Meals Management Board on Thursday 7th March to approve the school meal price variation request, effective from 1st April 2024. The new charge will be £2.81 per pupil per meal. This is an increase of 12.4%. The increase is a direct result of ongoing food inflation and an unforeseen additional increase to the national minimum wage. The Council undertook a full and transparent review of the evidence presented by Chartwells, to ensure all necessary mitigations had been explored and investigated to maintain affordability. The new price will be fixed until 31st March 2025.

Diary Dates

For a full list of school holiday dates please see the school website.

Thursday 2nd May – School closure, Police and Crime Commissioner elections

Monday 6th May – School closed for May bank holiday

Wednesday 8th May – Y4 Durham Cathedral

Tuesday 7th May -Thursday 9th May – Reception Bike ability Training
Wednesday 8th May – Y1 Class Assembly – 9:05am
WC Monday 13th May 2023 - Y6 SATS week
Tuesday 21st May – Reception Hardwick Park
Thursday 23rd May – Y4 Quadkids Competition
Thursday 23rd May – Pentecost Eucharist – 9:05am All Welcome
Friday 24th May – School closes for Spring half term holiday
Tuesday 4th June – School re-opens after Spring half term holiday
Wednesday 19th June – Y2 Class assembly – 9:05am
Tuesday 25th June – Hall Hill Farm Y1 Trip
Wednesday 12th June – Durham Dash
Friday 5th July – Monday 8th July – French Trip – Y5 and Y6
Monday 15th July at 2.45pm – Y6 Leavers’ Assembly – Y6 Parents Welcome
Friday 19th July at 10am – Y6 Leavers’ Service at St Mary’s Y6 Parents Welcome - refreshments served afterwards by St Mary’s parishioners
Friday 19th July – School closes for Summer holiday
Wednesday 4th September – School Re-opens for Autumn Term 2024/25
Wednesday 8th January 2025 – Friday 10th January 2025 – Y6 Trip to Robinwood

Christian Values

We are exploring the value of thankfulness and worship will be led by Mr Rumbles, Mrs Matthews, Fr. Bill, Fr. Peter and the pupils.

Some further information about this half term’s value:

This half term we are focussing on Thankfulness as our whole school Christian Value. We will be looking at why being thankful is important and discussing what the children are thankful for in their lives.

Some things to think about:

- How can we express our appreciation and thankfulness in the life of the school?
- How can we demonstrate that we see the good things of life as a blessing and a gift rather than a right?
- How can we be thankful for more than just material possessions?

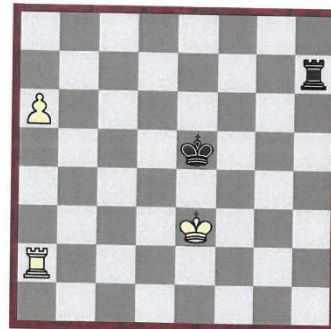
If you would like to receive a copy of the Weekly Bulletin by e-mail please e-mail the school. Shincliffe@durhamlearning.net The Weekly Bulletins from previous weeks can be found in the Parents’ section of the website.

Durham County Junior CHESS Championships

Belmont Community Centre,
Gilesgate Moor, Durham, DH1 2LL



Puzzles – White to play and win.



Saturday 27th April 2024, 1pm – 5pm

- Open to all juniors attending school or living in the former Durham County which apart from the current County Durham includes Darlington, Hartlepool, Stockton, Gateshead, Sunderland and South Tyneside. (Others are welcome to compete but ineligible for Championship titles and related prizes.) **All juniors are welcome – no previous tournament experience is required.**
- Registration 1pm to 1.10pm and Round 1 will start at 1.15pm. There will be 5 or 6 rounds. (It is **not** a knock-out event.) The event, including prize-giving, will finish by 5pm.
- Light refreshments including snacks, tea & coffee will be available.
- Five age group trophies: under-9, under-11, under-13, under-15 and under-18. **Ages on 31st August 2023**, as for normal current school year. E.g. Under-9 includes current Year 4.
- The winner of each section will receive a medal and trophy. There will also be a medal and trophy for the best performance by a girl aged under 15. Other medals may be awarded based on number of entries. (All trophies to be returned next year.)
- **Entry fee £8 per player.** Pay on the day, but you must enter in advance by email.
Closing Date – Wednesday 24th April.
- **Entries by Email:** junior.tournaments@durhamcitychess.co.uk
Please give: **name, date of birth, mobile number, home address and name of school.**
- For full details about this tournament and reports on previous events, visit the website at <http://www.durhamcitychess.co.uk/tournaments.php>
- **This Tournament is organised by the Durham County Chess Association,** <https://dcca.org.uk>.



CIO CHARITY No 1202217
"MAKING CHANGES TOGETHER"

Durham's official Parent Carer Forum and a group of parent carer volunteers who work with professionals to influence and improve services to children and young people (0-25 years) with special educational needs and disabilities in County Durham.

ABOUT US

We work in partnership with the Local Authority, Health and Social Care services and other groups and organisations to influence and challenge service provision and highlight the issues and needs of the families we represent.

We are a registered CIO with the charity number 1202217.



WHAT MCT DO

- ✔ 2 Parent Carer Conferences a year
- ✔ Family disability information events
- ✔ Workshops, training & 1:1 surgeries
- ✔ Information Sharing
- ✔ Work with other Parent Carer forums & organisations locally & nationally
- ✔ Attend focus groups including SEND Partnership, SEND Information, Short Breaks, Autism Steering group, Neurodevelopmental Pathway & Team Training.
- ✔ Plus lots more.....

HOW TO GET INVOLVED

- ✔ Attend one of our parent carer conferences
- ✔ Join our email mailing list (Just email us to join)
- ✔ Follow our social media accounts
- ✔ Attend one of our events
- ✔ Apply to be a volunteer

STRONGER TOGETHER

SHAPING SERVICES TOGETHER FOR FAMILIES OF UNDER 25 YEAR OLDS WITH ADDITIONAL NEEDS AND / OR DISABILITIES IN COUNTY DURHAM.

CONTACT US

✉ INFO@MCTDURHAM.CO.UK

<http://WWW.MCTDURHAM.CO.UK>

